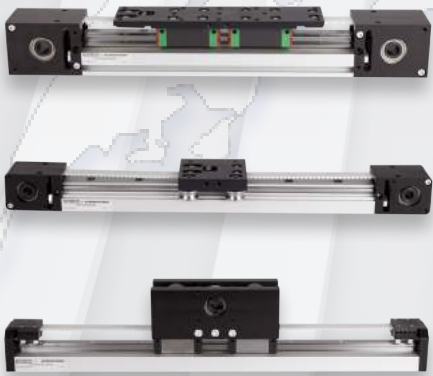


linear units

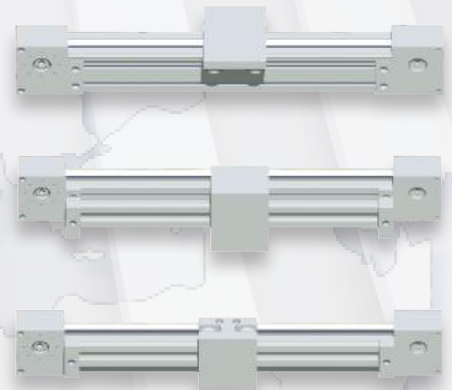
Product Overview



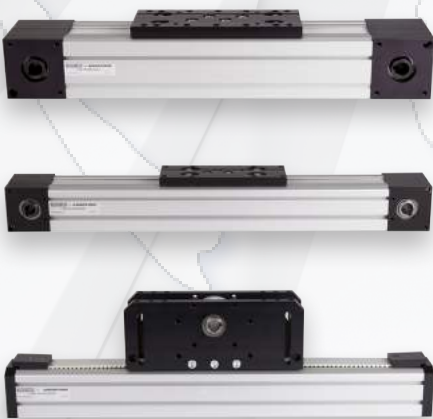
EXTERNAL GUIDE UNITS



MODULAR SERIES



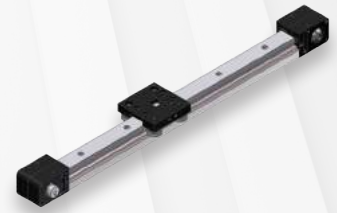
INTERNAL GUIDE UNITS



EXTERNAL GUIDE UNITS

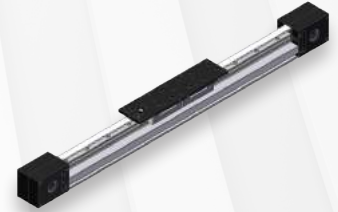
LT50 series - robust linear units with wheel or rail guide -

- Compact design, the width of the profile 50mm
- Guide system of hardened wheels on hardened shafts or rail guide, size -15-
- Double carriage design for high load
- G8 guide wheel systems very resistant to pollution
- Recirculating ball rail guide for heavy loads



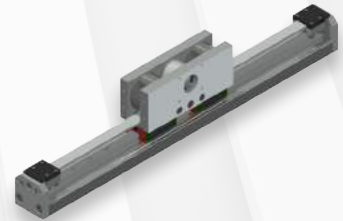
LT2 series - robust linear units with wheel or rail guide -

- Compact design, the width of the profile is 60 mm
- Guide system of hardened wheels on hardened shafts or recirculating rail guide, size -20-
- AT5 or toothed belt type AT10, 16 mm wide
- Double carriage design for high load
- C8 guide wheel system is very resistant to pollution
- Recirculating ball rail guide for heavy loads



LTZ50 series - robust linear units with rail guide -

- Compact design, the width of the profile 50 mm
- Rail guide system, size -15-
- Double carriage design for high load
- Omega type belt for vertical applications
- Recirculating ball rail guide for heavy loads



INTERNAL GUIDE UNITS

LT55 series - compact linear units with internal rail guide -

- Compact design, the width of the profile 55 mm
- Internal recirculating ball rail guide size -15 -
- Double carriage design for heavier loads
- Magnetic switches in T-slot for position detection
- Toothed belt type 25 AT5



LT80 series - compact linear units with internal wheel- or rail guide -

- Internal guide linear units, width of the profile 80 mm
- Hardened guide wheels on hardened shafts -10-, highly resistant to pollution
- Internal recirculating ball rail guide size -20- for heavy loads
- Magnetic switches in T-slot for position detection
- Toothed belt type 32 A T10



INTERNAL GUIDE UNITS

LTZ55 series - compact linear units with internal rail guide -

- Compact design, the width of the profile 55 mm
- Internal recirculating ball rail guide size -15 -
- Double carriage design for heavier loads
- Toothed belt type 25 AT5
- Omega belt type; perfect for vertical applications

LTZ80 series - compact linear units with internal rail guide -

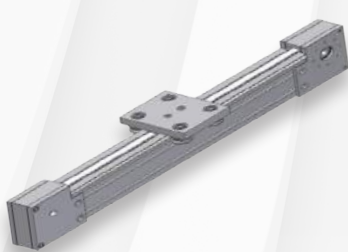
- Internal guide linear units, width of the profile 80 mm
- Internal recirculating ball rail guide size - 20 - for heavy loads
- Toothed belt type 32 A T10
- Omega belt type; perfect for vertical applications



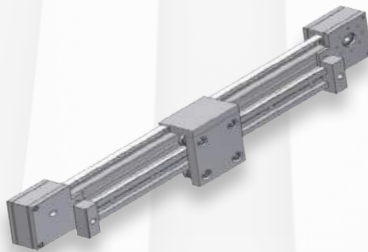
MODULAR GUIDE UNITS

LTC series - linear units with toothed belt drive and guide wheel system -

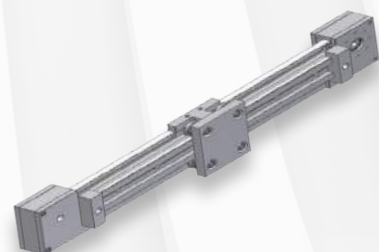
- Basic extrusion profile 45 x 90, 45 x 135 or 90 x 90 mm
- Guide system of hardened wheels on hardened shafts
- Toothed belt type A T10, 16, 25 or 50 mm wide
- Hardened and grinded V-shaped wheels
- Very resistant to pollution
- Endless different versions possible



D1

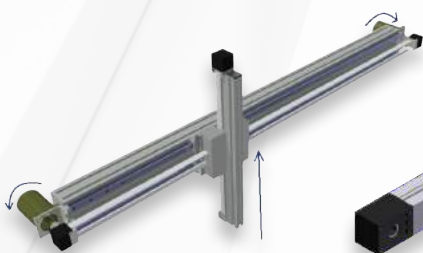


S1

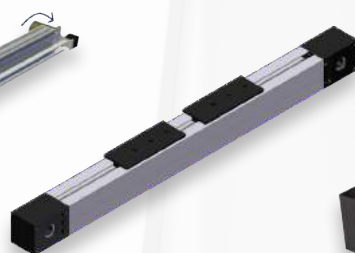


S2

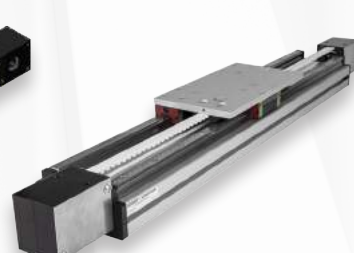
CUSTOMIZED LINEAR UNITS



LTO



LT60



LTY



LT88

Worldwide support for industrial linear units.
Because Almotion does the complete process they can offer a very convenient price-product ratio. This allows Almotion, as a specialist, to handle all challenges and make you a customized proposal.
Please contact us for your local technical assistant.



Almotion BV

Nijverheidsweg 14
6662 NG ELST (Gld)
The Netherlands

T: +31 85 0491 777

F: +31 85 0491 770

E: info@almotion.nl

I : www.almotion.nl

I : www.lineair.nl  

I : www.lineairegeleiding.nl